

PART NUMBER	LENGTH	WIDTH
SI-18-2	18"	2"
SI-18-4	18"	4"
SI-20-2	20"	2"
SI-20-4	20"	4"
SI-24-2	24"	2"
SI-24-4	24"	4"
SI-26-2	26"	2"
SI-26-4	26"	4"
SI-30-2	30"	2"
SI-30-4	30"	4"
SI-32-2	34"	2"
SI-32-4	34"	4"
SI-36-2	36"	2"
SI-36-4	36"	4"
SI-42-2	42"	2"
SI-42-4	42"	4"
SI-48-2	48"	2"
SI-48-4	48"	4"

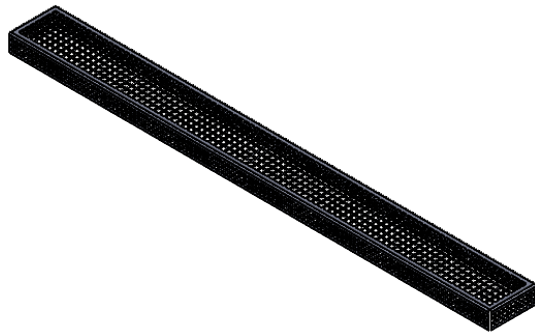
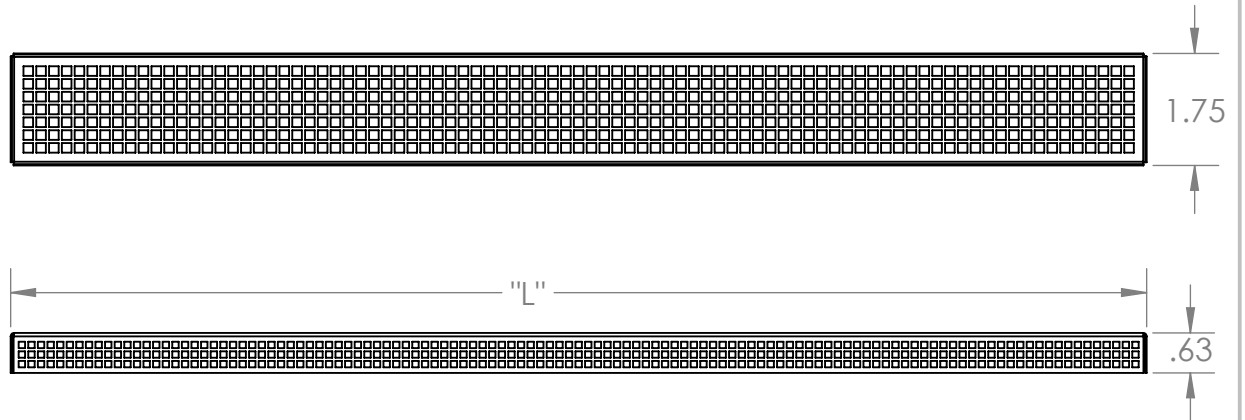
"SI" Screen Inserts

Stainless Steel screen insert for stainless steel drip troughs.


Features

- All stainless steel construction
- Made from 23 Gauge stainless steel woven mesh
- Type 304 finished 1414 woven cloth, #4 finish.

Product Dimensions



PICTURE MAY NOT ACCURATELY REPRESENT FINISHED PRODUCT LOOK

UNLESS OTHERWISE SPECIFIED: DIMENSIONS ARE IN INCHES TOLERANCES: ANGULAR ±2.50° ONE-PLACE ±0.5 TWO-PLACE ±0.13	REV.	REVISION DESCRIPTION	DRAWN	CHECKED	DATE	COMMENTS:	 INTER DYNE SYSTEMS, INC 676 E. Ellis Rd., Norton Shores, MI 49441 Phone: 231-799-8760 Fax: 231-799-9690
		A	STANDARD PRINT CREATED	ASR			
PROPRIETARY AND CONFIDENTIAL THE INFORMATION CONTAINED IN THIS DRAWING IS THE SOLE PROPERTY OF INTER DYNE SYSTEMS. ANY REPRODUCTION IN PART OR AS A WHOLE WITHOUT THE WRITTEN PERMISSION OF INTER DYNE SYSTEMS IS PROHIBITED.							PART NO.
							SI-STANDARDS
							MATERIAL:
							FINISH: 304 #4
						QTY: N/A	