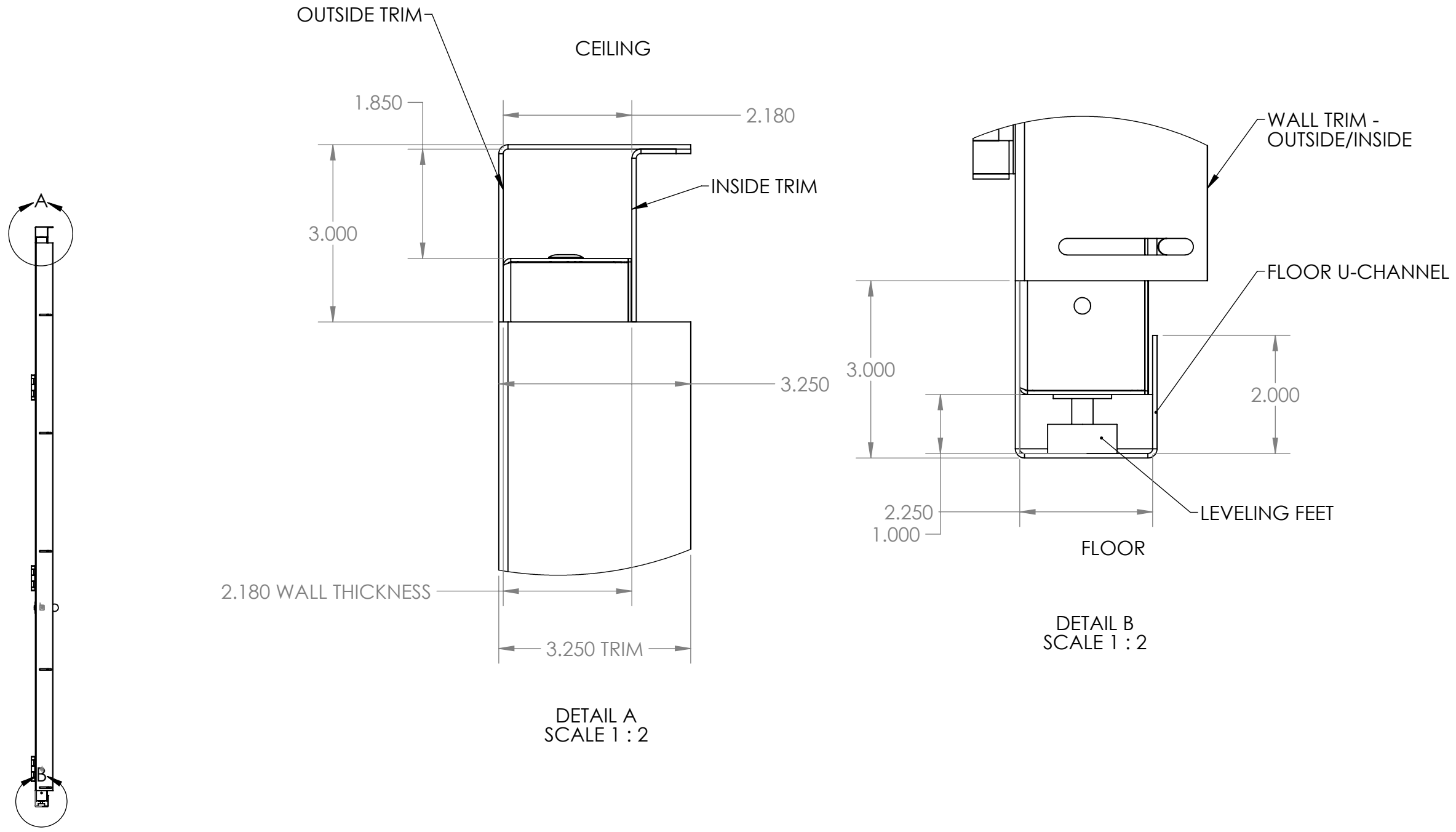




CLEARANCES MAY VARY



DETAIL A  
SCALE 1 : 2

DETAIL B  
SCALE 1 : 2

**UNLESS OTHERWISE SPECIFIED:**  
 DIMENSIONS ARE IN INCHES  
 TOLERANCES:  
 ANGULAR ±1.0°  
 ONE-PLACE ±0.060  
 TWO-PLACE ±0.030  
 THREE-PLACE ±0.015

**PROPRIETARY AND CONFIDENTIAL**  
 THE INFORMATION CONTAINED IN THIS DRAWING IS THE SOLE PROPERTY OF INTER DYNE SYSTEMS. ANY REPRODUCTION IN PART OR AS A WHOLE WITHOUT THE WRITTEN PERMISSION OF INTER DYNE SYSTEMS IS PROHIBITED.

REV.	REVISION DESCRIPTION	DRAWN	CHECKED	DATE	COMMENTS:
A	SUBMITTALS SENT	JLC		04/07/25	

**QTY: N/A**



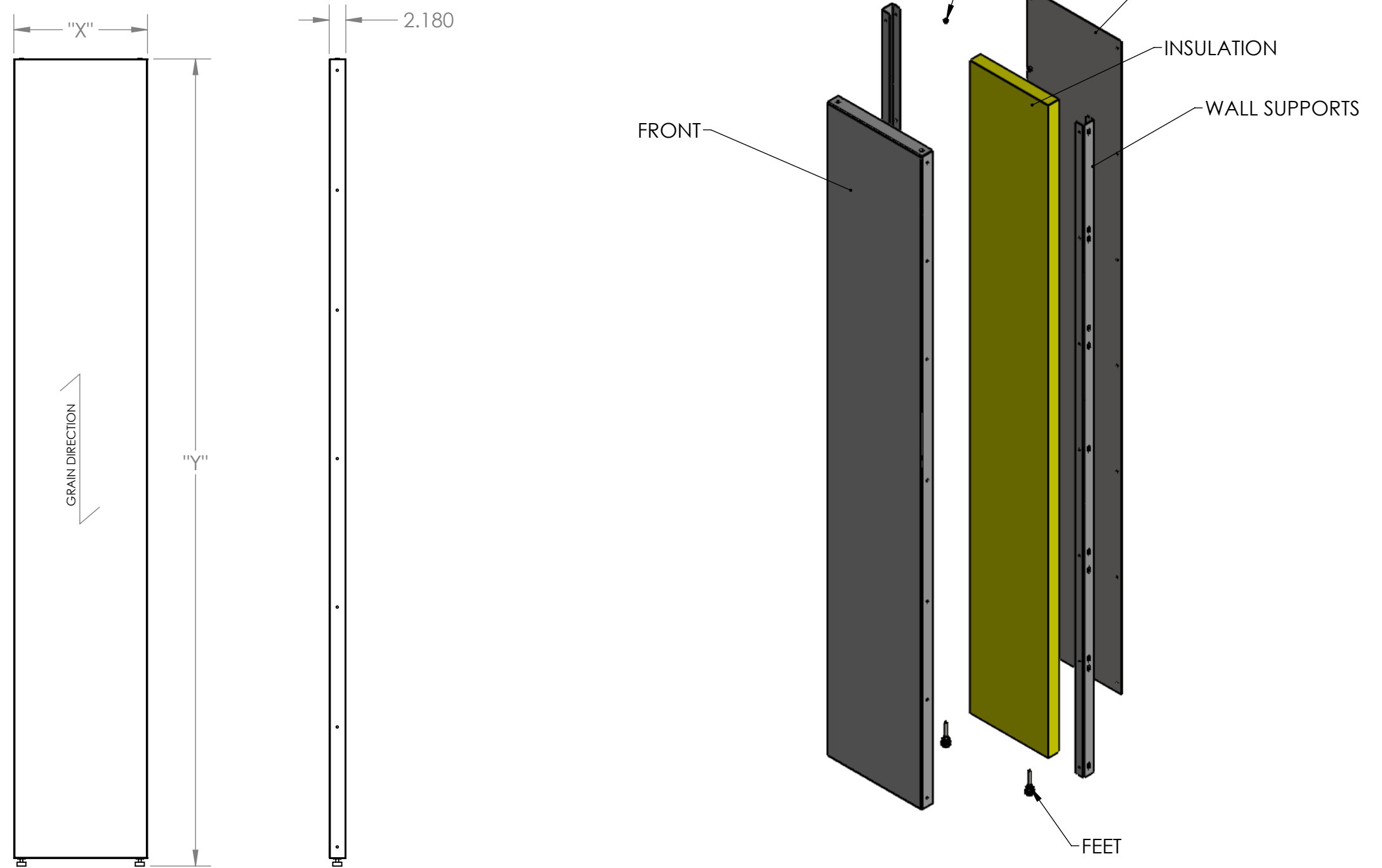
**INTER DYNE SYSTEMS, INC**  
 676 E. Ellis Rd., Norton Shores, MI 49441  
 Phone: 231-799-8760 Fax: 231-799-9690

**PART NO.**  
**MOD WALL DETAILS**

MATERIAL: **16GA** FINISH: **304 #4**



TYPICAL PANEL DETAIL



**UNLESS OTHERWISE SPECIFIED:**

DIMENSIONS ARE IN INCHES  
 TOLERANCES:  
 ANGULAR ±1.0°  
 ONE-PLACE ±0.060  
 TWO-PLACE ±0.030  
 THREE-PLACE ±0.015

**PROPRIETARY AND CONFIDENTIAL**  
 THE INFORMATION CONTAINED IN THIS DRAWING IS THE SOLE PROPERTY OF INTER DYNE SYSTEMS. ANY REPRODUCTION IN PART OR AS A WHOLE WITHOUT THE WRITTEN PERMISSION OF INTER DYNE SYSTEMS IS PROHIBITED.

REV.	REVISION DESCRIPTION	DRAWN	CHECKED	DATE	COMMENTS:
A	SUBMITTALS SENT	JLC		04/07/25	

**QTY: N/A**

**INTER DYNE SYSTEMS, INC**  
 676 E. Ellis Rd., Norton Shores, MI 49441  
 Phone: 231-799-8760 Fax: 231-799-9690

**PART NO. MOD WALL DETAILS**

MATERIAL: **16GA** FINISH: **304 #4**



